

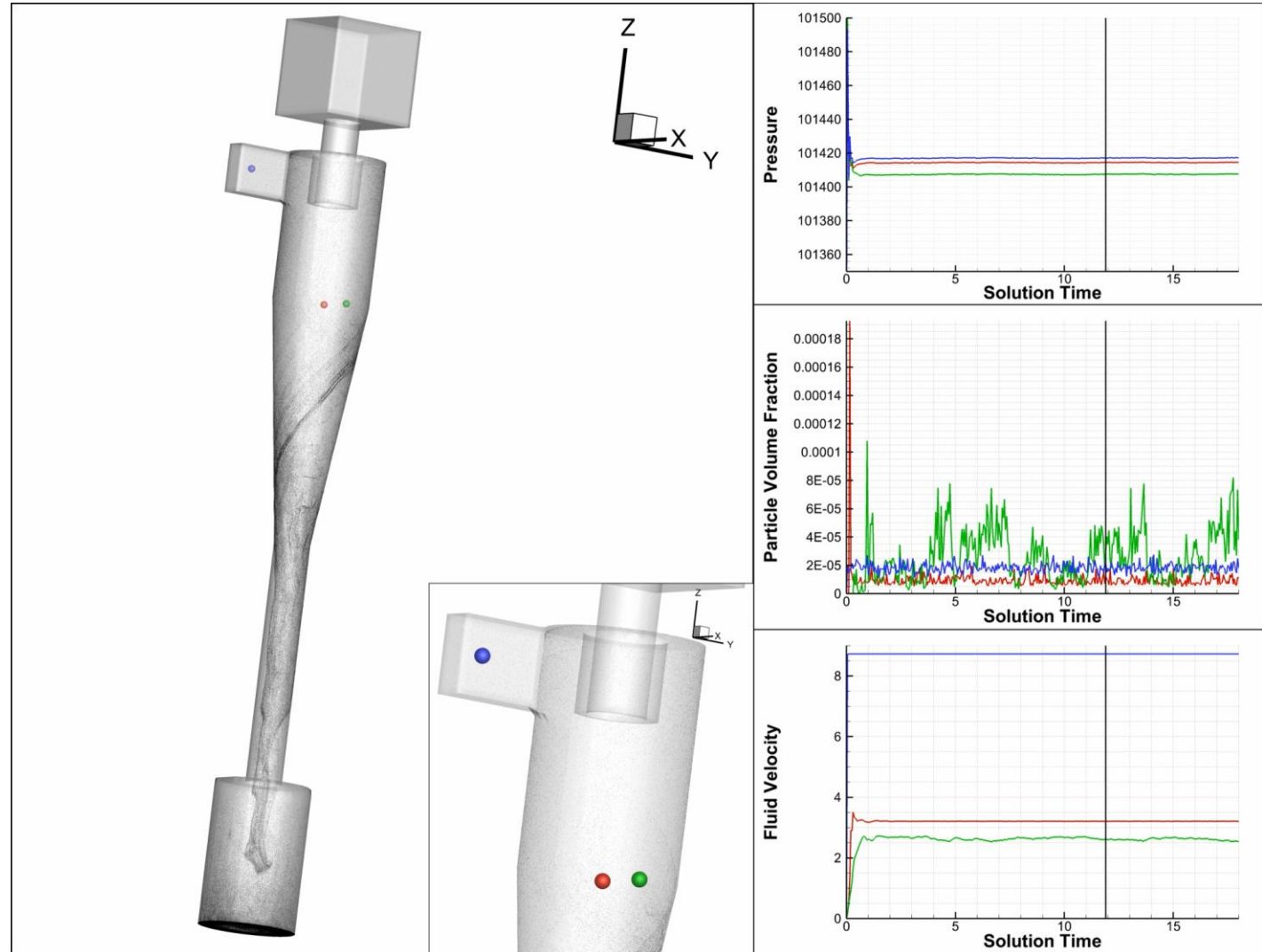


Scott Fowler, Product Manager

# Who is Tecplot?

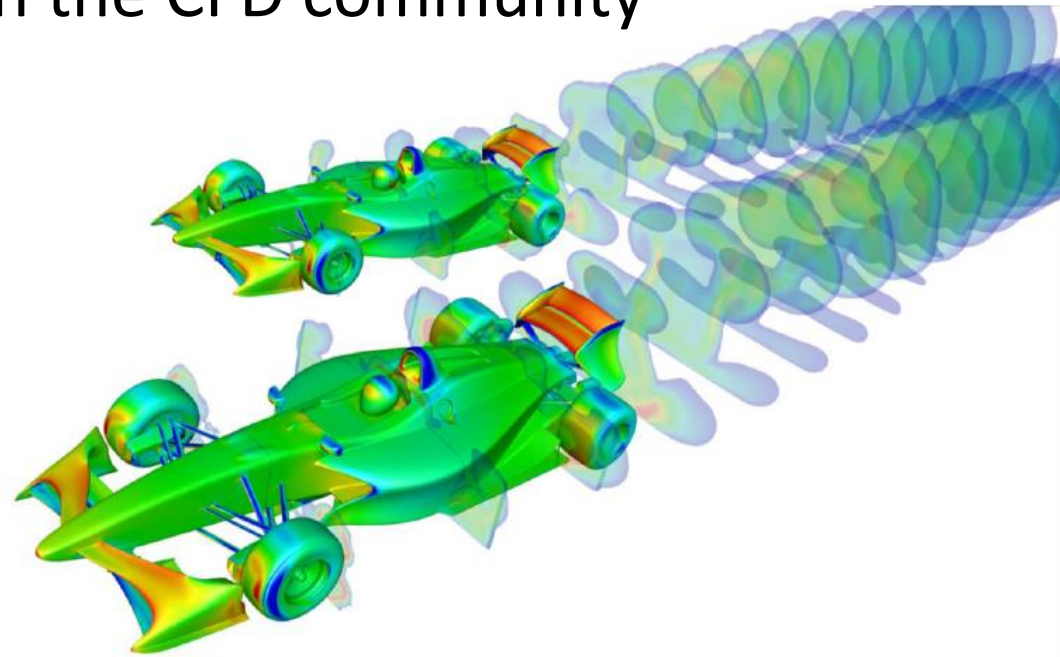
## We help Engineers SEE

Empowering engineers and scientists to discover, analyze and understand information in complex data, and helping them effectively communicate their results.



# Tecplot at a Glance

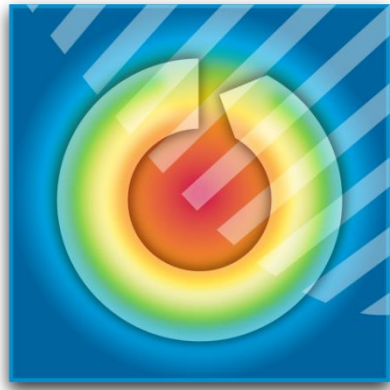
- Founded in 1981 by Boeing engineers – Seattle, WA
- Largest independent CFD post-processor – 47,000 users worldwide
- Known for being the most complete and flexible post-processing option
- Focused on large data and emerging needs in the CFD community



# *The Big Problems in Post-Processing*

## **Big, Heterogeneous Data**

- Data sizes growing with Moore's Law
- Data IO lagging far behind



## **Understanding Ensembles**

- Thousands of simulations created routinely
- Databases, optimization runs hard to comprehend



## **Automation**

- Increasing need to quickly post-process, modify, enhance data

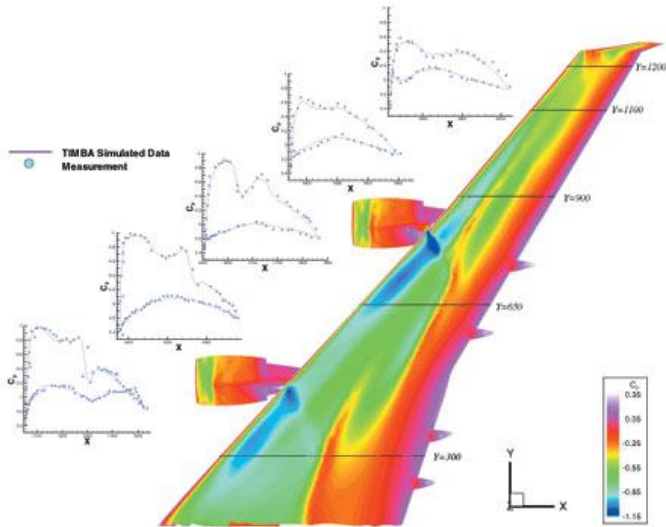


# Tecplot Desktop Solutions

360™

## CFD Visualization & Analysis

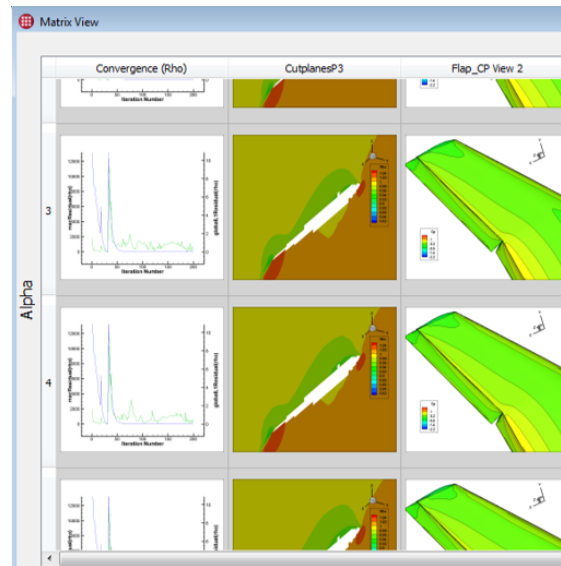
Quickly plot and animate your CFD data exactly the way you want. Analyze complex data, arrange multiple layouts, and communicate your results with brilliant images.



chorus™

## Design Space Exploration

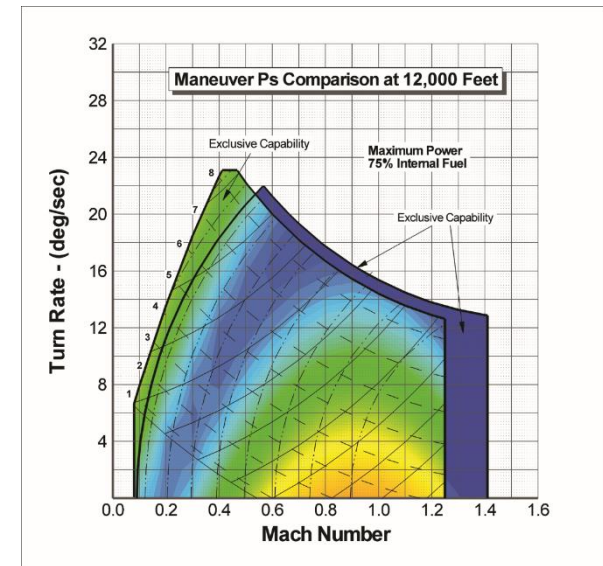
Manage and Analyze collections of CFD simulations. Compare results from multiple sources and evaluate overall system performance in a single post-processing environment.



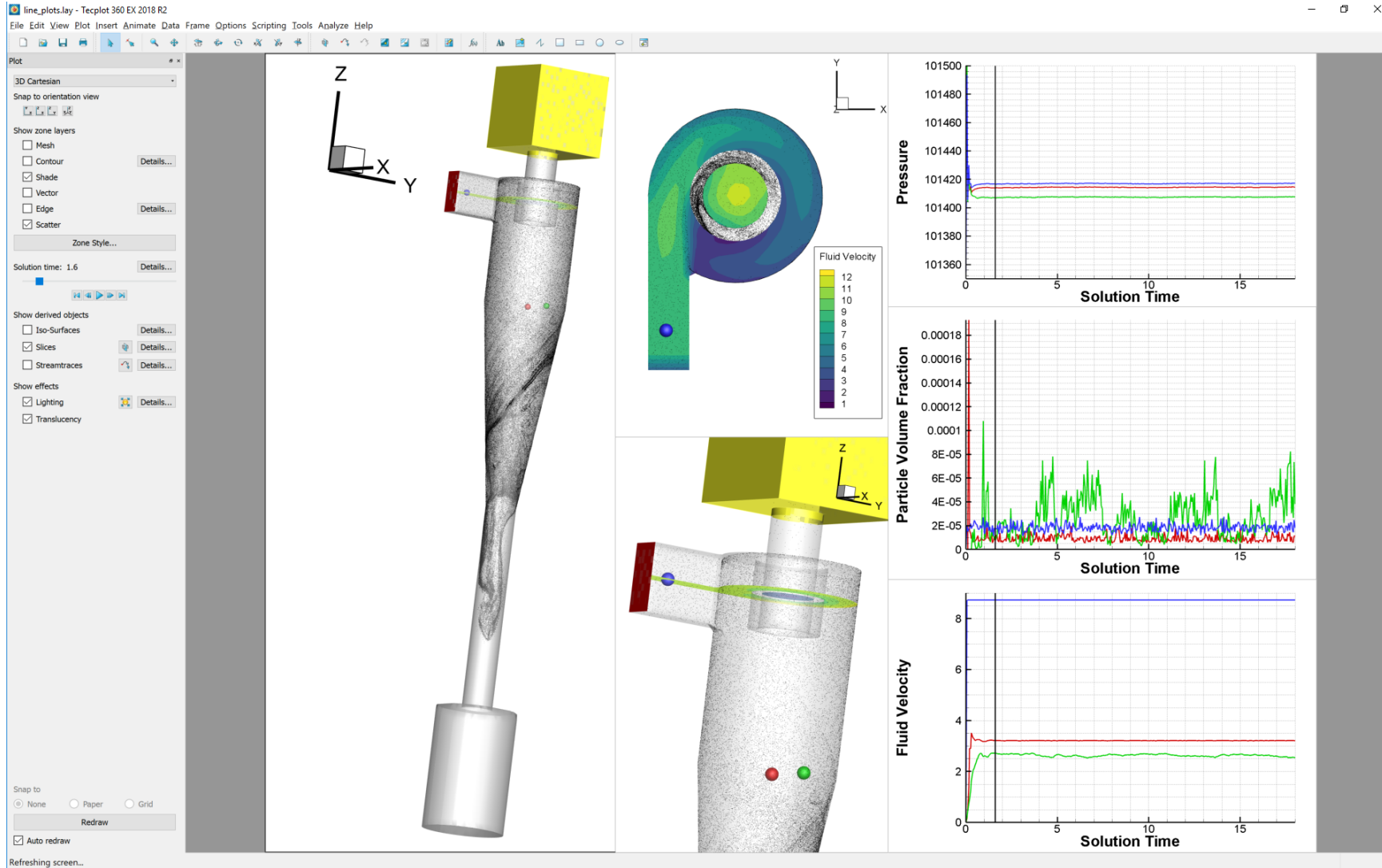
focus™

## Test & Experimental Data

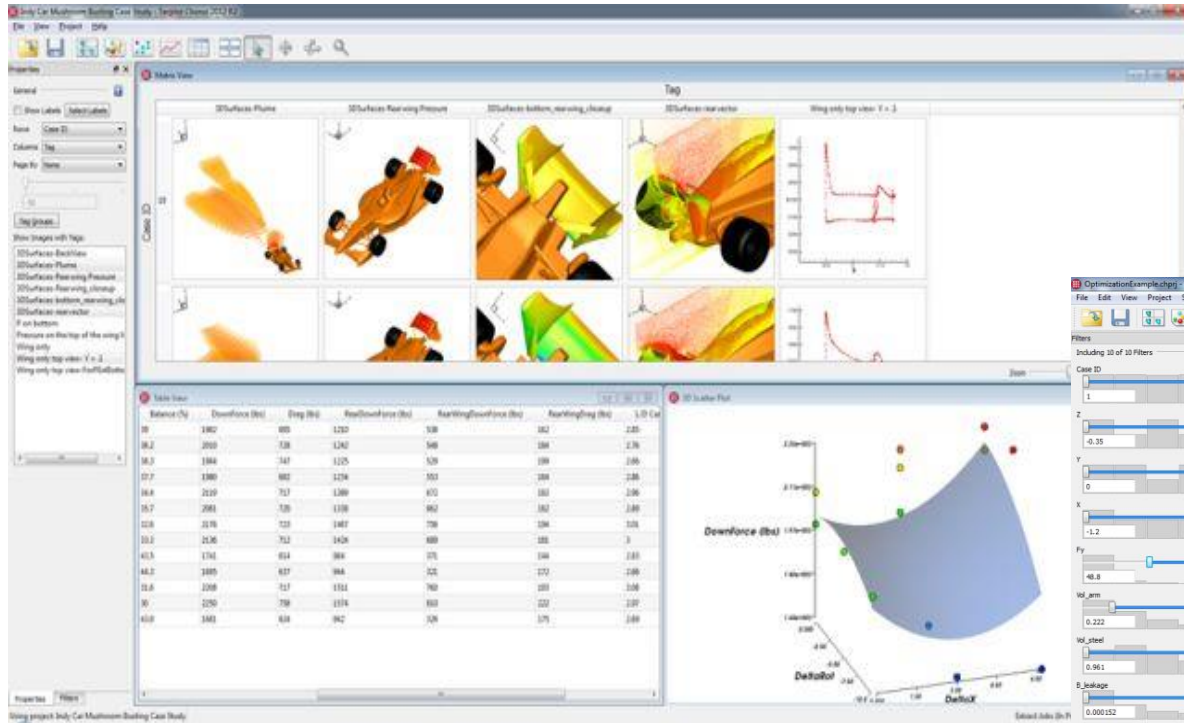
Increase your productivity by automating routine data analysis, XY & 2D plotting tasks and 3D visualizations. Communicate your results with professional high-quality output.



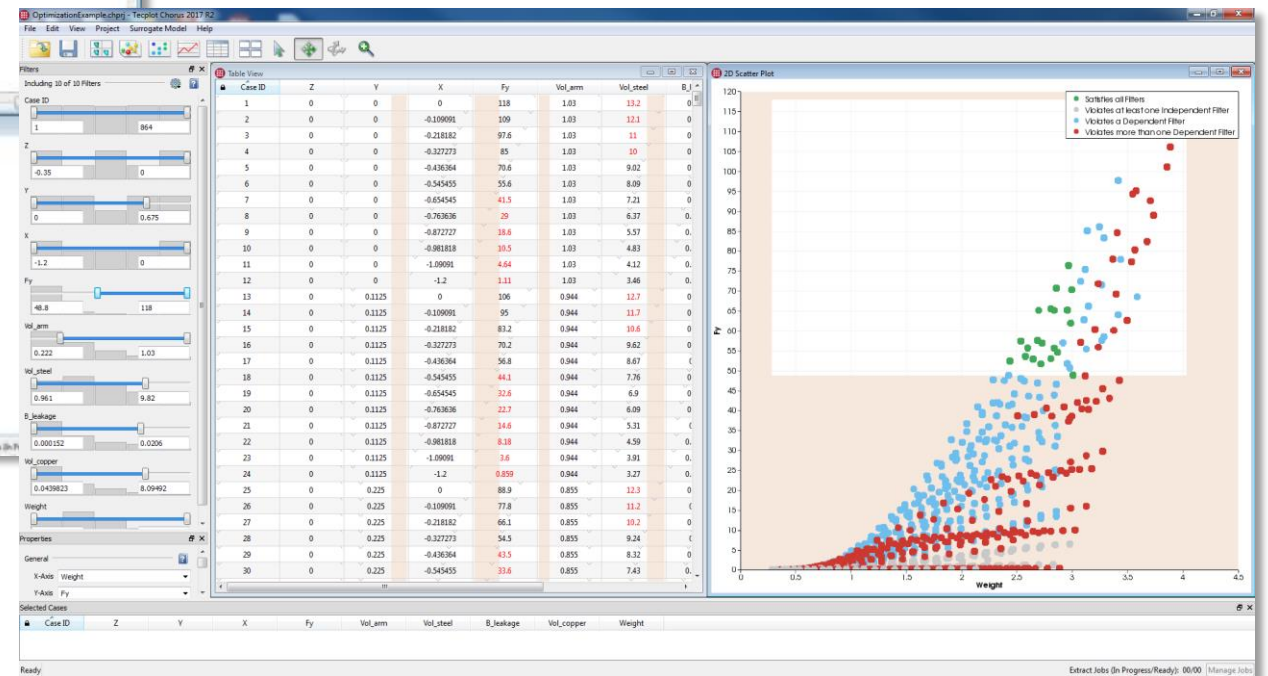
# Big Data – Tecplot 360



# More Data – Design Space Exploration with Chorus



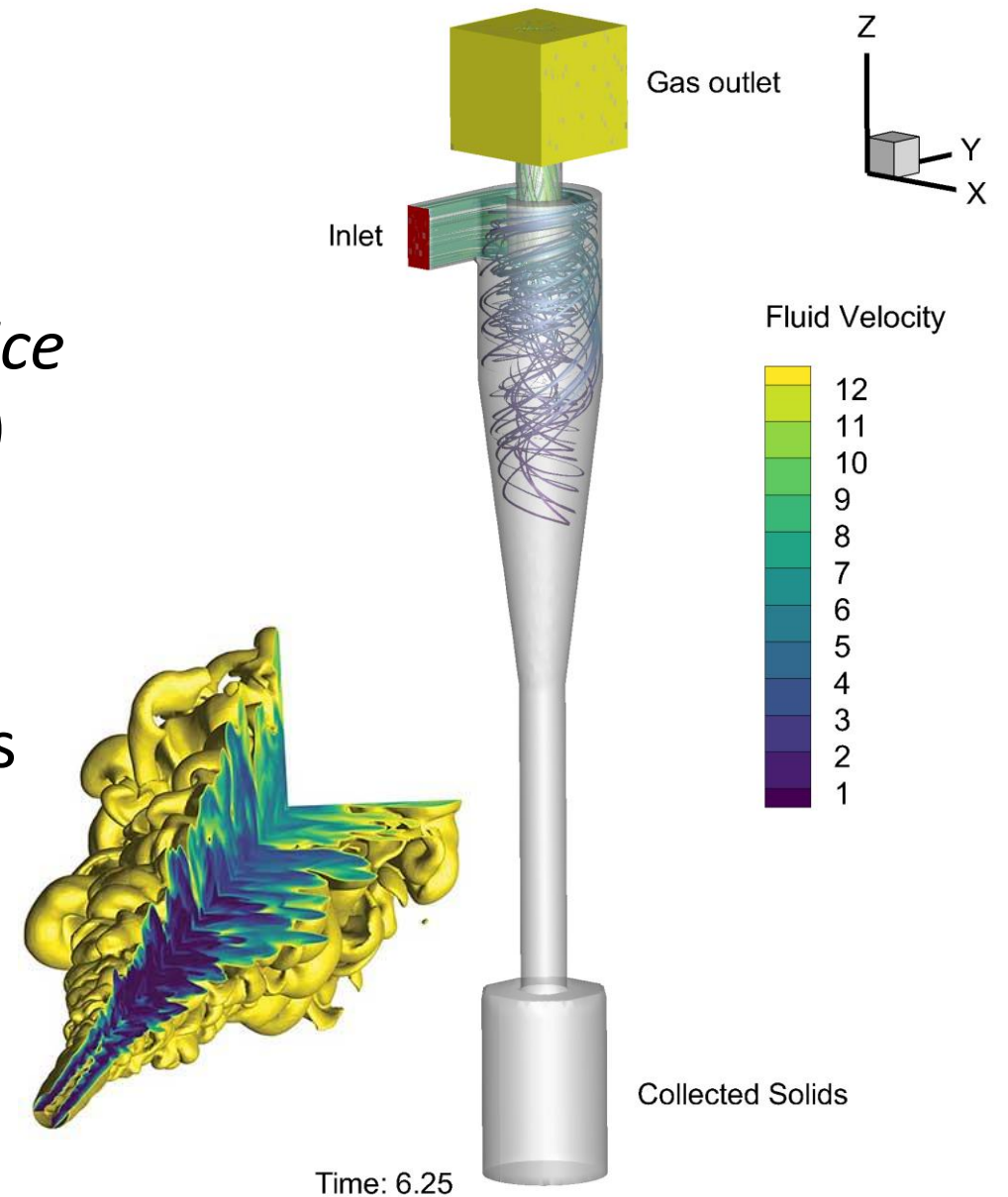
Multi-Dimensional Visualization: Inputs & Outputs



Meta Models / Surrogate Models

# Automation – PyTecplot

- PyTecplot allows automation from *your choice* of Python environments (64-bit, 2.7 or 3.5+)
- Gain direct access to the data
- Truly headless batch mode
- Create custom GUIs to streamline workflows



*Tecplot is Trusted*



**GENERAL DYNAMICS**  
Bath Iron Works

Gulfstream

**TOYOTA**



**HONDA**



**Pratt & Whitney**  
A United Technologies Company

**TSC**  
THE SPACESHIP COMPANY

**FIAT**



**Raytheon**

**BOMBARDIER**  
the evolution of mobility

# Tecplot for Barracuda



- Unlimited use of Tecplot 360 with Barracuda data
- Unlimited use of PyTecplot\*
- Unlimited CPU count



- Distributed & Licensed by CPF D
- Tier 1 technical support provided by CPF D

\*GUI Mode only. Tecplot Chorus & PyTecplot (batch) require a TecPLUS support & maintenance subscription

*Learn More:*

## **CPFD Software**

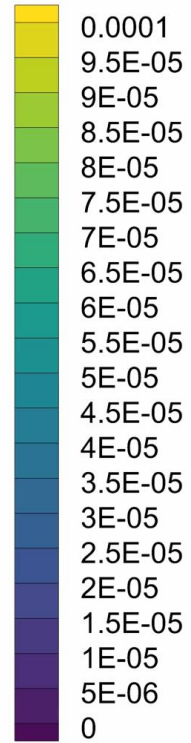
- [cpfd-software.com](http://cpfd-software.com)
- [sales@cpfd-software.com](mailto:sales@cpfd-software.com)

## **Tecplot, Inc**

- [tecplot.com](http://tecplot.com)
- [info@tecplot.com](mailto:info@tecplot.com)

# Thank you, CPFD!

Particle Volume Fraction



18.00

